



58MM Thermal Receipt Printer

User Manual



Please read the user manual carefully to use the product properly.

Package:

- Printer 1PC
- Adaptor Power line 1 PC
- Paper roll 1 ROLL
- USB Data cable 1PC
- Use manual 1PC
- Driver CD 1 PC

Product Features:

- Print quality is high, low cost
- Low noise, high speed printing
- Support raster bitmap printing
- Easy paper install structure, simple and convenient to operate
- Built-in power supply design, to save space and more convenient to configure
- Support GB18030 big font, easy to print uncommon characters
- Support multi language print, suitable for users all over the world
- Support download and print LOGO&graphics
- Support Windows, Linux, Android and IOS system printing
- Built in data buffer, print and receive data at the same time
- Support character zoom, rotation, adjustable line spacing printing character
- The power consumption is small, and without ribbon cartridge, low use cost
- Compatible with ESC/POS instruction set
- With USB interface

Parameters:

Items	Parameters
Printing Method	Thermal Line
Printing Method	48MM
Resolution	384clots/Line (Etdotsimm, 203dpi)

About eprinter user manual:

Thanks for shopping from eprinter!

This user manual will help you know and use the product in a better way. Keep the user manual safe for future reference.

Safety tips:

- Do not disassemble the printer personally, pls read this manual before use_
- The printer should be installed in a solid place to avoid vibration or impact damage to the printer.
- Do not store and use the printer in the environment of high temperature, high humidity, and heavy pollution.
- When plug connection line, please make sure the printer power is closed.
- In order to ensure the quality of printing and the life of the product, please use the normal manufacturers' thermal paper.
- After printing, print head is still at high temperature, pls do not touch, to avoid bum.
- Pls do not use dissolved substances, such as: benzene, thinner or alcohol wipe to clean the printer casing. At the same time, please do not use corrosive chemicals and detergent to contact printer. To avoid damage to the printer.
- The printer can't print in a paperless state, otherwise it will seriously damage the printing roller and thermal print head.

Application Area:

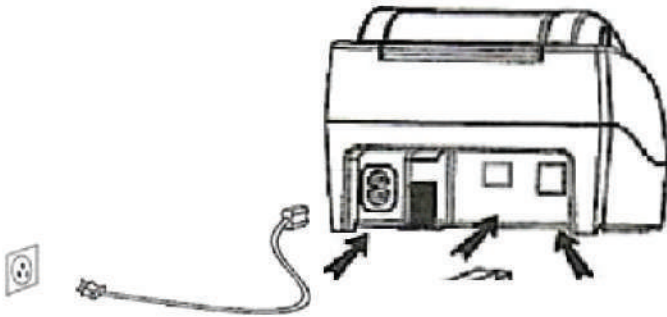
- Electronic cash register POS system printing
- Electronic transfer system printing
- Sports, postal, civil aviation bill printing
- Query, service system bill printing
- Tax bill printing

Print parameters	Printing Speed	90mm/Second
	Interface Type	USB
	Line Spacing	3.76 mm (Can adjust line spacing by command)
	Line No.	Font A:32 character /Line Font 8:42 character/Line Simple,traditional Chinese-16 lines
	Character	Standard GB18030 simplified/traditional Chinese Fonts
Bar code & Character	Extended character set	PC437/Katalcana1PC850/PC860/PC863/PC8651 WestEurope/Greek/Hebrew/EastEuropeanan/W PC1252/PC866/PC852/PC858/franli/Latvian/Ar abic/PT151,1251/PC737/WPC/1257/ThalVietnam/PC864/PC1001/(Latvian)/(PC1001)/(PT151,1251)/(WPC1257)/(PC864)/(Vietnem)/(Thal)
	13,11. code	UPC-A/UPC-E/JAN13(EAN13)/JAN8(EAN8)CO DE39/ITF/CODABAR/CODE93/CODE128
Graphics printing	Graphics printing	Supports bitmap download and print
Paper	Type	Thermal Roll
	Width	57.5i0.5mm
	Diameter	s60mm
	Feed Method	Easy feed(Clarneshell feed)
Commands	Commands	ESC/POS
Power	Power Adaptor	Input: AC 100V-240V,50-60Hz Output: DC 12V12A

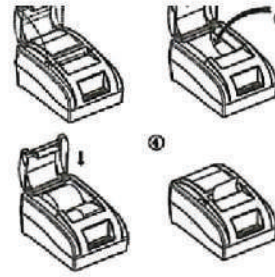
	Cashier Drawer output	DC 12V1A
Buffer	Input Buffer	32K bytes
	NV Flash	40K bytes
Physical characteristics	Weight	590g
	Dimension	185*130.112(MM)
Environment	Working	Temp: 5 – 45°C, Humidity 10 – 80%
	Storage	Temp: -10 – 50°C, Humidity: 10 – 90% (No dew)
Reliability parameter	Print Head Life	50KM (print density 12.5)
Software	Driver	Android, 10S, Linux, Windows

Printer connection:

- 1 connect the power adapter cable to the printer power supply interface
- 2 connect the USB data cable to the printer's interface.
- 3 the cashier drawer cable connected with printer interface



2. Put thermal print paper in the paper holder according to the pic below.
3. Press down the flip cover



Note: take care of the roll direction, if reverse direction, the content won't be print out.

Switch, key name, indicator and function:

1 POWER switch

The switch can turned on and off the printer power supply.

2 (FEED) key

Press the button can feed

3 (STATUS) light

STATUS light long off indicates the printer is in the normal working state, STATUS light flashing indicates that the printer is short of paper, print head overheating or error and other abnormal conditions.

4 (POWER) light

The indicator light on indicates that the printer is connected to the power supply, this light off indicates that the printer power is off.

Self test:

Printer self-test method are as follows: When the printer connected to the power adapter, under off status, press feed key and power key at the same time until you see status red light on, then release your hand, printers will print a self test page.

Install the print paper

58MM series thermal printer using 58MM thermal paper, using easy paper structure, convenient to install paper.

1. thumb and forefinger pinch the flip cover front place, pull up to open the printer's flip cover.

Switching between English and Chinese:

Switching between English and Chinese are as follows: When the printer connected to the power adapter, under off status, press feed key and power key at the same time until you see status red light on-off, then release your hand, printers will change to other language.

Density:

Printer Density change are as follows: When the printer connected to the power adapter, under off status, press feed key and power key at the same time until you see status red light on-off-on, then release your hand, feed 'some paper, you will see printer show Current Printer Density is Level- 1/2/3/4'

Hex mode system:

Enter into Hex mode are as follows: When the printer connected to the power adapter, under off status, press feed key and power key at the same time until you see status red light on-off-on-off, then release your hand, it enter into hex mode.

Printer connection:

Our driver is very convenient to install and use, click driver and install it until its installation success. Then connect USB cable between printer and computer or other devices.

Printer Repair and maintenance:

1. printer external and warehouse cleaning: please use a wet cloth gently wipe the printer surface and internal paper warehouse.
2. Printer core clean: printer core must be clean on time, especially the quality of printing is decline, cleaning methods are as follows: put cotton

dipped in anhydrous alcohol and gently wipe the printer core ceramic parts as shown in the picture below until clean enough.

3. If find water inside printer, please immediately disconnect the printer power and dry the printer naturally.

Failure Analysis:

Failure phenomenon	Failure cause	Solution
Printer status indicator flashing	1. Printer lack of paper 2. The printer head is too hot 3. The flip not closed well	1. Install paper correctly 2. Open the cover and dissipate heat fully then go on printing. 3. Cover the flip well
When the printer prints only paper run but not print	Print paper install reverse	Pls install the print paper for a opposite direction
The printer print fuzzy	The print head not clean for a long time	Put cotton dipped in anhydrous alcohol and gently wipe the printer core ceramic parts until clean enough
There is no response of printer	The power adaptor not connected	Pls check power adaptor is connected well or not, power switch is turn on or not
Printer can net test, but can not print online	Driver port selection error	Pls select the correct print driver port based on the actual connection port